



ecoHITCH - Designed Specifically For Your **Green Vehicle**

Installation Instructions

Application Fits

2012+ Honda Civic Coupe/Sedan/Hybrid

2" & 1.25" EcoHitch Stealth

200 lbs Tongue Weight/ 2,000 lbs Towing Weight

Torklift Central
315 Central Ave N
Kent, WA 98032
253-854-1832
www.torkliftcentral.com
support@tlcentral.com

Stay Connected



torkliftcentral



torkliftcentral



tlcentral



torklift central



torklift central



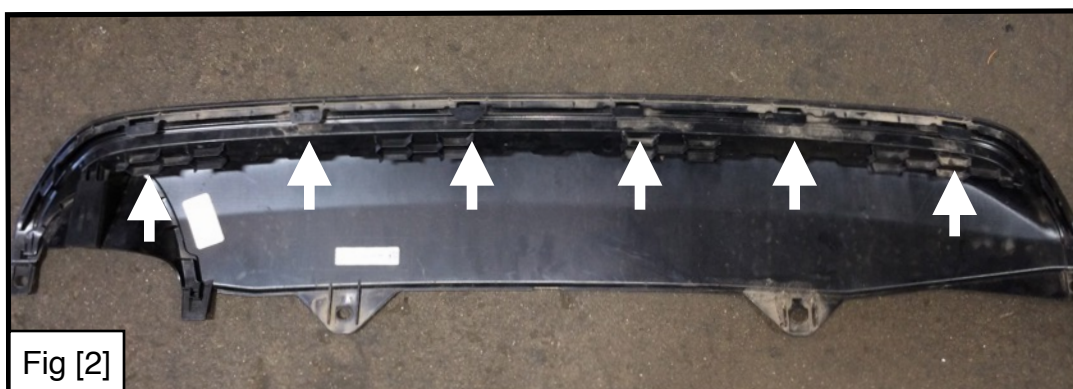
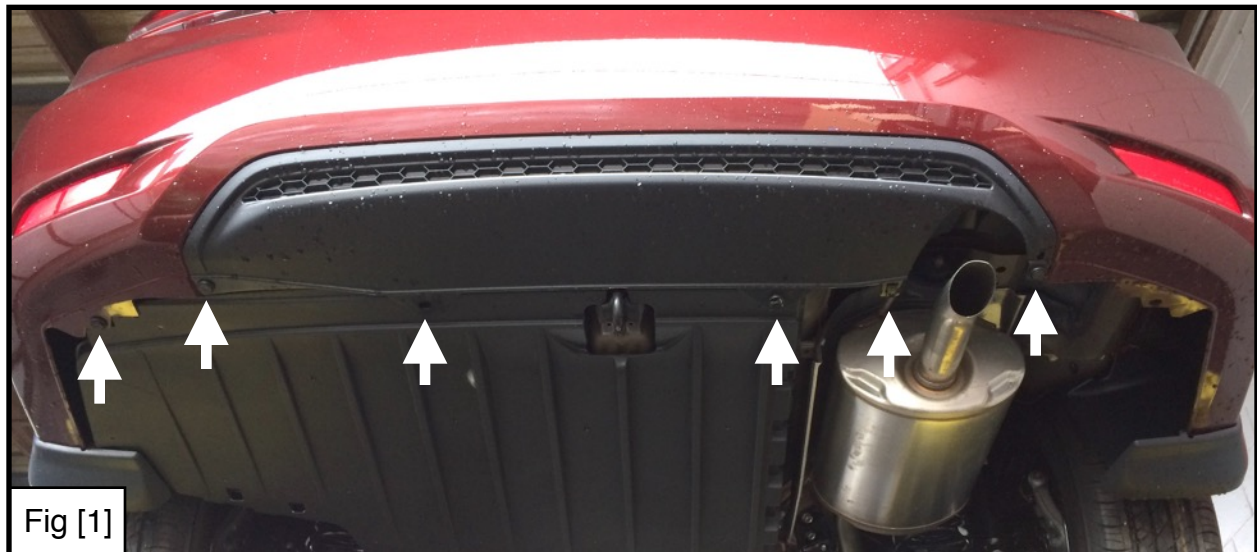
QTY	Fastener
8	3/8" Flat Washer
4	3/8" Lock Washer
4	3/8" Inner Tooth Lock Washer
4	3/8"-16 Hex nut
4	3/8"-16 x 1-1/2" hex bolts
4	3/8"D 3/4" x 2" Plate Washers
1	3/8" Fish-wire
1	1/2"-13 x 2" Hex Cap Screw
1	1/2" Lock Washer
1	1/2"-13 Hex Nut
5	1/2"D 1"x2" Plate Washer

READ THESE INSTRUCTIONS THOROUGHLY AND ACCOUNT FOR ALL HARDWARE LISTED BEFORE BEGINNING INSTALLATION!

Step 1. Raise vehicle on suitable jack stands or hoist.

Step 2. Carefully remove the (6) plastic clips on the lower bumper fascia then remove the center trim panel by depressing the tabs on the back of the panel.

See Figure [1] & [2]



Step 3. Lower the muffler by lubricating the rubber exhaust bung with WD-40 or equivalent and disconnecting. Do not let the muffler hang freely! Support with a jack, wood block, or other stand. See Figure [3].

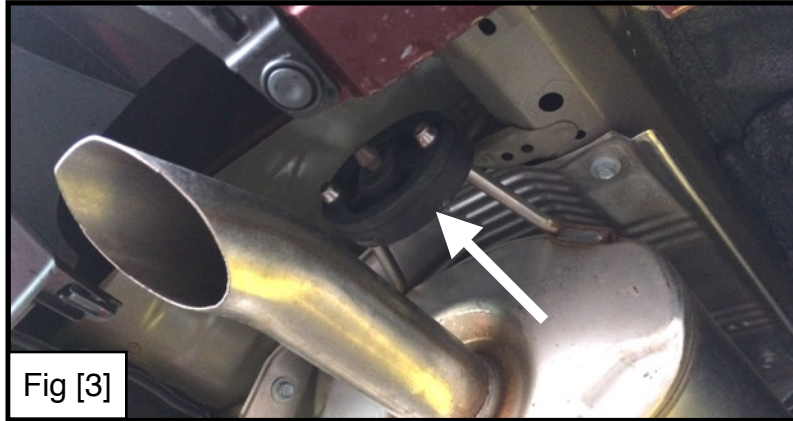


Fig [3]

Step 4. Remove (4) fasteners holding the heat shield in place then set the heat shield aside for medication in a later step. See Figure [3].

NOTE: The fourth fastener will be located toward the back on the inside of the vehicle on the heat shield.



Fig [4]

Step 5. Starting on the passenger side, fish the bolt hardware into the frame rails by feeding the coil end of bolt fisher through hole A in Figure [5] and out of hole C. Once the coil is accessible, attach (1) 3/8"x1-1/2" bolt, (1) 3/8" internal tooth star lock washer, and (1) 3/8"D 3/4"x2" plate washer to the coil end of the bolt fisher. With the hardware attached, pull the assembly into position. Repeat for hole B. See Figure [5].

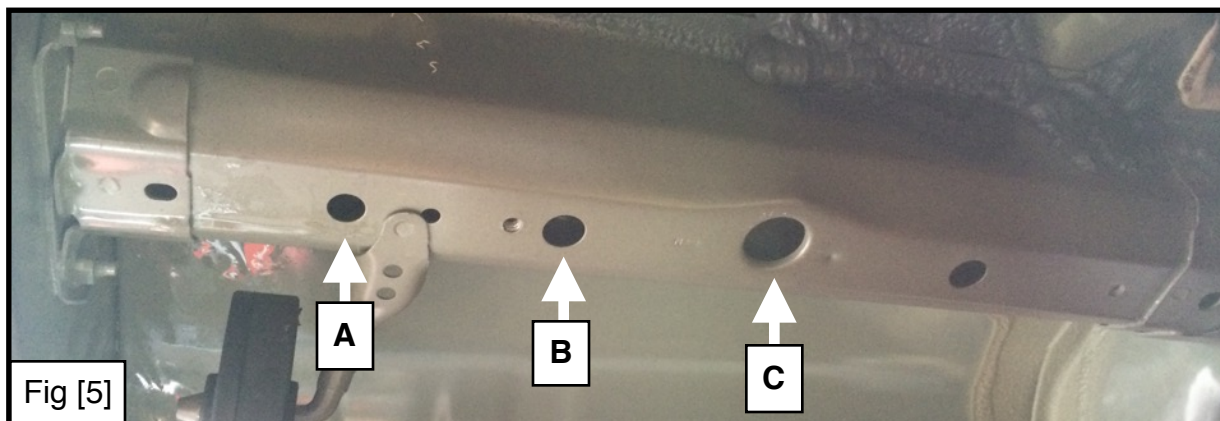
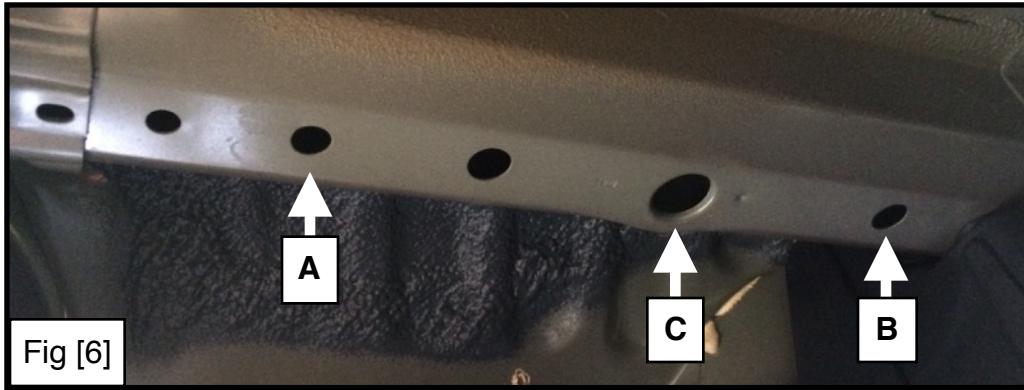
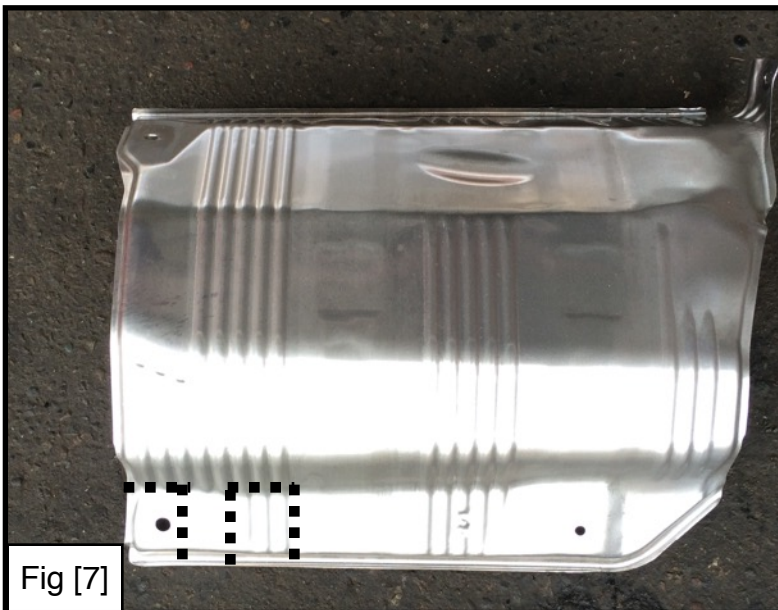


Fig [5]

Step 6. Repeat Step 5 on driver side frame rail. See Figure [6].



Step 7. Mark and trim the heat shield with a pair of tin-snips or other suitable tool. Once trimmed, reinstall the heat shield but do not install the fasteners along the frame rail portion. See Figure [7] & [8].



Step 8. Raise the hitch up into position, being careful not to push the fished hardware back into the frame rails. Secure each screw with (2) 3/8" flat washers, (1) 3/8" lock washer, and (1) 3/8"-16 hex nut and hand tighten. Once all screws are secured and the hitch is centered, torque all 3/8" hardware to 30ft-lbs. See Figure [9].



Step 9.

If you purchased a 2" model, take the supplied 1/2"-13 x 2" bolt and place it through the driver side of the hole in the hitch receiver. Attach (4) 1/2"D 1"x2" plate washers to the bolt then push the bolt through the vehicle tow hook. Attach (1) 1/2"D 1"x2" plate washer after the tow hook then (1) 1/2" lock washer and (1) 1/2"-13 hex nut. Torque assembly to 75 ft-lbs. See Figure [10]

If you purchased a 1.25" model, take the supplied 1/2"-13 x 2" bolt and place it through the driver side of the hole in the hitch receiver. Attach (2) 1/2"D 1"x2" plate washers to the bolt then push the bolt through the vehicle tow hook. Attach (1) 1/2"D 1"x2" plate washer after the tow hook then (1) 1/2" lock washer and (1) 1/2"-13 hex nut. Torque assembly to 75 ft-lbs. See Figure [10]



Step 10. Mark and trim an access hole for the hitch receiver to pass through on the center trim panel using the following measurements. See Figure [11].

2" Receiver: 3-1/4" wide x 3-1/4" long
1.25" Receiver: 2-1/2" wide x 3-1/4" long.

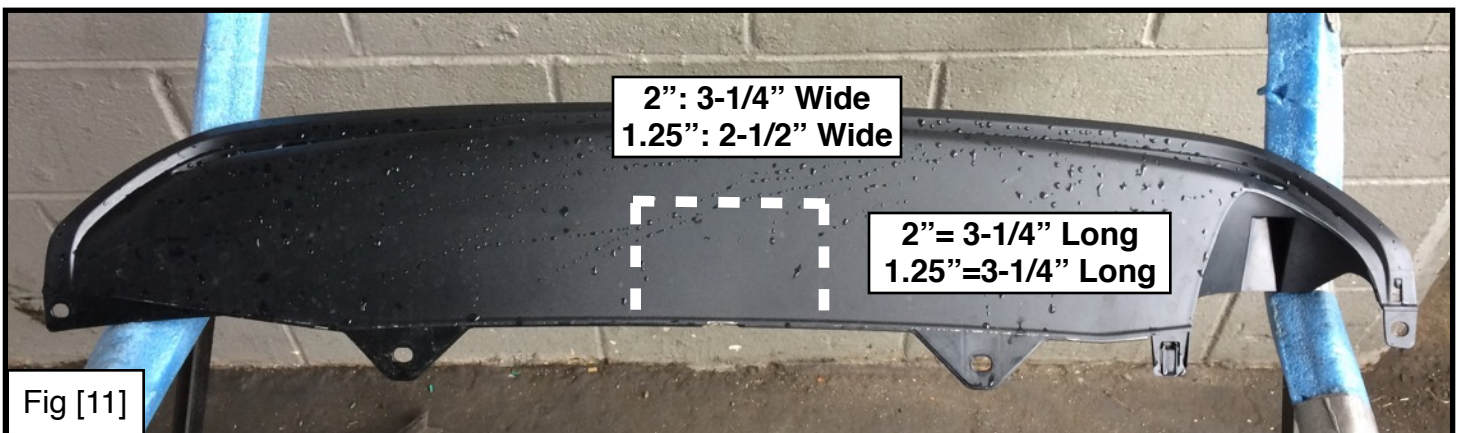


Fig [11]

Step 11. Trim the underbody panel as shown in Figure [12]. Reinstall the exhaust then reinstall all body components.

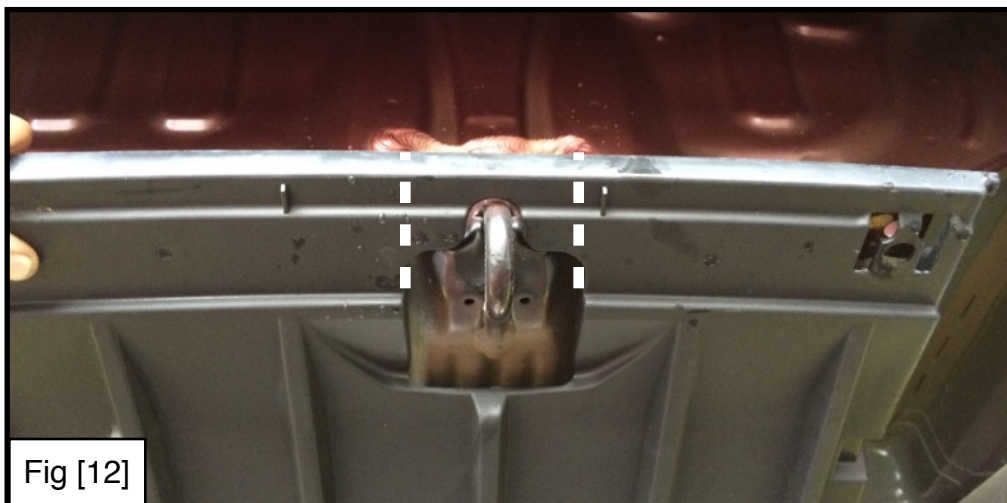


Fig [12]

Congratulations on the completed installation of the Honda Civic Stealth EcoHitch! It is designed with a lifetime warranty for a lifetime of enjoyment. If you have any questions or suggestions please contact our tech support at support@tlcentral.com or by phone at (253)-854-1832.

WARRANTY/DISCLAIMER INFORMATION

Torklift Central requires proof of purchase for warranty claim registration, with pictures of any defective product before issuing a replacement. Torklift will not accept claims on any product without proof of purchase, which can be faxed, scanned, emailed or mailed to the information provided below. Torklift Central warrants its hitches, custom hitch receivers and accessories (excluding electrical wire harnesses which carry a warranty from their specified manufacturer) from date of purchase against defects in material and workmanship under normal use and service for the ownership life of the original consumer purchaser. Torklift Central will replace free of charge any part that proves defective in material or workmanship when presented to Torklift Central, transportation charges prepaid by purchaser, at the address below. **This warranty is limited to defective parts replacement only. Labor charges and/or damage incurred in installation or replacement, as well as incidental and consequential damages connected therewith are excluded.** This warranty does not include normal wear and tear or the finish and paint. Rusting, cracking or peeling of the finish is also excluded. Some states do not allow the exclusion or limitation of incidental or consequential damages, so the above limitation or exclusion may not apply to you. Any damage to Torklift Central products as a result of misuse, abuse, neglect, accident, improper installation or any use violative of instructions furnished by Torklift Central will void the warranty. This warranty gives you specific legal rights and you may also have rights, which vary from state to state. With warranty service, you may be able to go to a small claims court, a state court or a federal district court.

Although Torklift Central trailer hitches are both tested and rated for towing within the specific capacity label found on each trailer hitch. Torklift Central assumes no liability for vehicle manufacturers warranty due to the use of a Torklift Central trailer hitch being used for towing behind any vehicle or using the trailer hitch in a manner that it was not designed for. Although this specific trailer hitch has a load rating, which includes trailer tongue weight, and a trailer weight carrying capacity, Torklift Central is not responsible for the voiding of any warranty on any vehicle due to factory towing limitations. All vehicle warranties are the sole property and responsibility of the owner of the vehicle that the Torklift Central trailer hitch is installed upon. Torklift Central does not endorse towing behind any vehicle if the vehicles manufacturer states that towing is not recommended. Check your vehicle's owner's manual for the proper tow rating of your vehicle.

ADDRESS: 315 Central Ave N. Kent, WA 98032

WARNING Your vehicle may have a lower tow rating than this trailer hitch. If your vehicle's tow rating is less than the rated towing capacity on your Torklift Central trailer hitch, your trailer hitch capacity is limited to your vehicle's factory rated towing capacity.

FOR EXAMPLE: the label on your Torklift Central trailer hitch states it's capacity is rated for 500 pounds tongue weight and 5,000 pounds towing weight. However your vehicle's factory rated towing capacity is limited to only 350 pounds tongue weight and 3,500 pounds towing weight. In this example your maximum towing capacity of your Torklift Central trailer hitch is limited to 350 pounds tongue weight and 3,500 pounds towing weight as stated by your vehicle's maximum factory tow rating.

DANGER Never exceed your vehicle's manufacturer's recommended towing capacity which may be a lower rating than this trailer hitch

Unsure of your tow rating? Download our towing app from the app store to find your vehicles tow rating.
www.torkliftcentral.com/app.php